



PARDAVIMAS

**PARDUODAMAS NAMAS 150.00 KV.M  
PLOTU, FLOORS****585 000 €** (3 900.00 €/m<sup>2</sup>)**MAIN INFORMATION**Area  
**150.00 m<sup>2</sup>**Rooms  
**3**Price: **585 000 € (3 900.00 €/m<sup>2</sup>)**

Status: Aktyvus

Sale or rent: Pardavimas

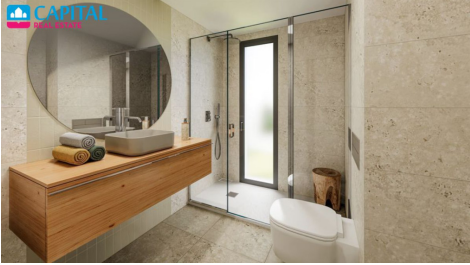
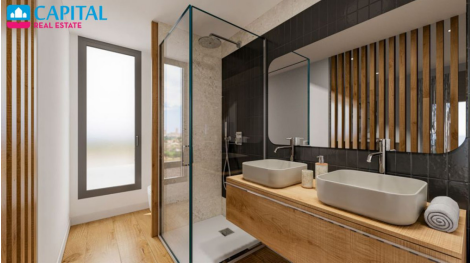
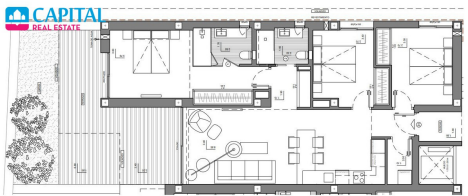
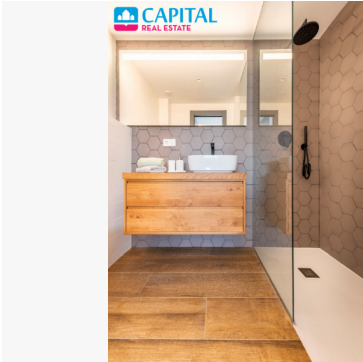
**Additional Information**

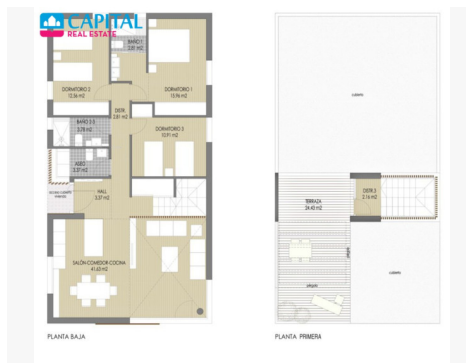
This modern villa is located in the residential complex Sierra Cortina Resort, an exclusive urbanisation located at the foot of the Puig de Campana and just 2 km from the coast. The villa comprises a living-dining room with an open-plan kitchen, three double bedrooms, one of which has an en suite bathroom, a separate bathroom and a guest toilet. Moreover, the villa also has a private pool, a garden, a roof terrace and parking space. The villa is less than a 10-minute drive from the centre and beaches of Benidorm. Just 700 metres away is a shopping centre with several large supermarkets. You will also find numerous golf courses, nautical clubs, hiking trails, shops and restaurants and many more facilities in the area. Enjoy the peace, nature and sun here, between mountains and sea. Villas are also available with a garage, a second floor or a larger garden. More information on request.

**Contact details**

Phone number: +370 655 71088 / +370 670 82473

Contact via email: [lina.matukiene@capitalrealty.com](mailto:lina.matukiene@capitalrealty.com)





CAPITAL SUPERFICIES DE VIVIENDA			
	P.BAJA	P.PRIMERA	TOTAL
SUP. ÚTIL CERRADA	97.20 m <sup>2</sup>	2.16 m <sup>2</sup>	99.36 m <sup>2</sup>
SUP. ÚTIL ABIERTA	0.00 m <sup>2</sup>	24.43 m <sup>2</sup>	24.43 m <sup>2</sup>
SUP. ÚTIL TOTAL			123.79 m <sup>2</sup>
SUP. CONS. CERRADA	116.88 m <sup>2</sup>	5.52 m <sup>2</sup>	122.40 m <sup>2</sup>
SUP. CONS. ABIERTA	1.97 m <sup>2</sup>	26.24 m <sup>2</sup>	28.21 m <sup>2</sup>
SUP. CONS. TOTAL			150.61 m <sup>2</sup>

