



PARDAVIMAS

PARDUODAMAS BUTAS**560 500 €** (5 095.45 €/m²)**MAIN INFORMATION**Area
110.00 m²Rooms
3

Price: **560 500 € (5 095.45 €/m²)**
Status: Aktyvus
Sale or rent: Pardavimas

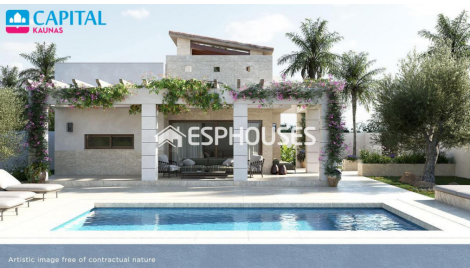
Additional Information

Swimming pool of 8x4 m and Solarium of 100m². All services are within walking distance. Ciudad Quesada is a large urbanization in Rojales that has grown into a charming village with all major amenities and many leisure facilities. The place has a beautiful location next to the La Marquesa golf course. To enjoy the beautiful beaches of Guardamar del Segura, it only takes ten minutes by car. In addition, it is partially surrounded by the lagoon of La Mata, an area of 700 hectares of biodiversity and nature. Located on a pleasant south facing hillside in the province of Alicante, Ciudad Quesada offers a great and exciting quality of life in the sun. The town has developed rapidly over the past two decades, with a wide range of properties to suit all needs and budgets, including detached villas, smaller gated communities, bungalows and apartments. The services available in Quesada have also improved over time so it is now home to a wide range of bars, restaurants, shops and supermarkets along with several banks, dental clinics, pharmacies, hairdressers, newsagents, tobacconists and a new Centro Doctor located in the urbanization Doña Pepa.

Contact details

Phone number: +370 609 81369

Contact via email: sandra.babraviciene@capitalrealty.com



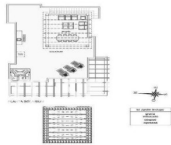
CAPITAL KAUNAS

VERA RESIDENTIAL - GENERAL PLAN



© 2018 CAPITAL KAUNAS. All rights reserved. This document is confidential and intended for the use of the recipient only. It is not to be distributed, copied, or otherwise used without the prior written consent of CAPITAL KAUNAS.

CAPITAL KAUNAS VERA 24-25-26



| | |
|------------------------------|------------------------|
| 3 BEDROOMS (2 BATHROOMS) | 1000.00 M ² |
| INDOOR SWIMMING POOL | 20.00 M ² |
| PERGOLA | 20.00 M ² |
| PERGOLA TERRACE | 20.00 M ² |
| POTENTIALITY OF POOL TERRACE | 20.00 M ² |
| PLOT | 20.00 M ² |