



SALE

PARDUODAMAS BUTAS**549 000 €** (2 652.17 €/m²)**PAGRINDINĖ INFORMACIJA**Plotas
207.00 m²Kambariai
3

Kaina:

549 000 € (2 652.17 €/m²)

Statusas:

Active

Pardavimas ar nuoma

Sale

Papildoma informacija

FRONT LINE GOLF NEW BUILD VILLAS IN FONT DEL LLOP, ALICANTE

New Built semi-detached villas has 3 bedrooms, 3 bathrooms, open plan kitchen with the lounge area, fitted wardrobes, basement, solarium, private garden with the swimming pool and parking space on the plot.

The villas have the best orientation, with the best views of the Font del Llop golf course.

They enjoy large windows properly oriented and protected, allowing the sun to warm and illuminate the interior of the homes in winter.

All the houses are designed and equipped to comply with high performance in terms of energy efficiency.

Font del Llop is strategically located in the heart of the province of Alicante. It is 10 minutes from the international airport Alicante-Elche. The nearest train station is located in Alicante, 15 minutes from the golf course. In addition, a modern road network connects it with the main cities of Spain.

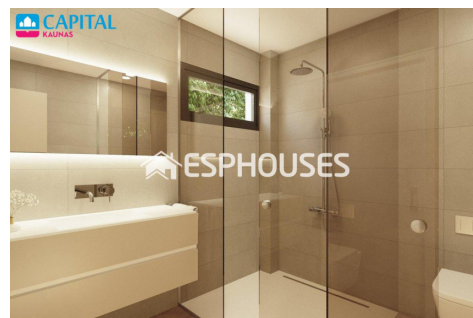
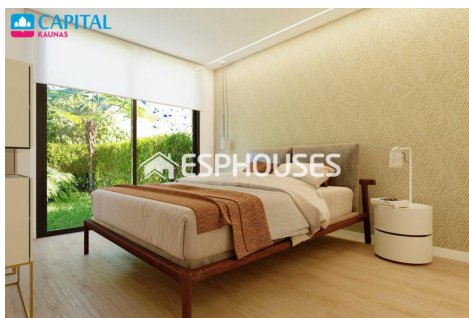
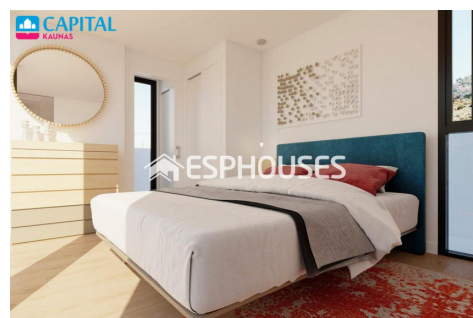
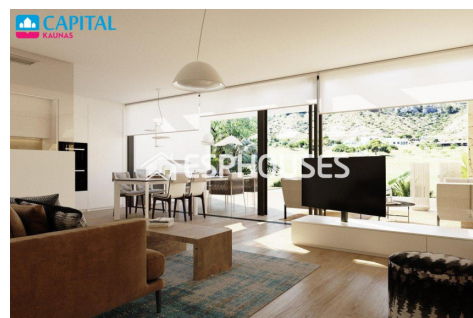
Font del Llop Golf Resort is located 20 minutes away from the wonderful unspoilt beaches of the Mediterranean Sea. Therefore, the temperature is perfect (18°C on average) for playing golf and other outdoor sports, with 300 days of sunshine a year.

The golf course also enjoys 25 km of open terrain for hiking and mountain biking.

Kontaktiniai duomenys

Telefono numeris: +370 609 81369

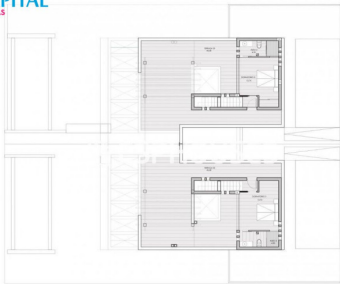
Susisiekti el.paštu: sandra.babraviciene@capitalrealty.com



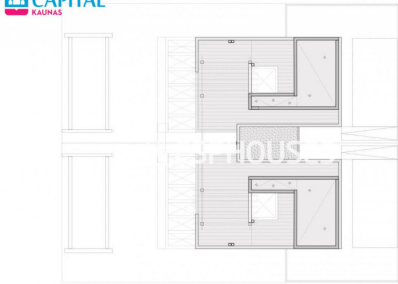
CAPITAL
KAUNAS



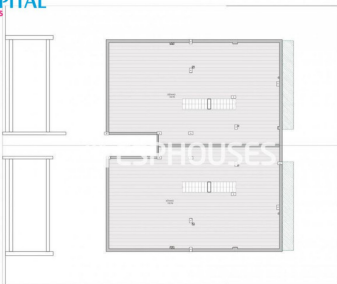
CAPITAL
KAUNAS



CAPITAL
KAUNAS



CAPITAL
KAUNAS



CAPITAL
KAUNAS



CAPITAL
KAUNAS

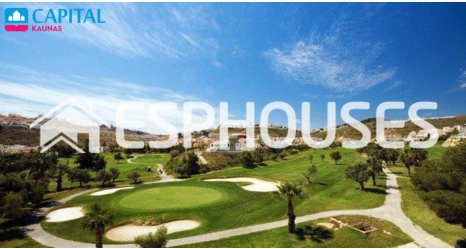


1	2	3	4	5	6	7	8	9	10	11	12	13	14	15	16	17	18	19	20	21	22	23	24	25	26	27	28	29	30	31	32	33	34	35	36	37	38	39	40	41	42	43	44	45	46	47	48	49	50	51	52	53	54	55	56	57	58	59	60	61	62	63	64	65	66	67	68	69	70	71	72	73	74	75	76	77	78	79	80	81	82	83	84	85	86	87	88	89	90	91	92	93	94	95	96	97	98	99	100
---	---	---	---	---	---	---	---	---	----	----	----	----	----	----	----	----	----	----	----	----	----	----	----	----	----	----	----	----	----	----	----	----	----	----	----	----	----	----	----	----	----	----	----	----	----	----	----	----	----	----	----	----	----	----	----	----	----	----	----	----	----	----	----	----	----	----	----	----	----	----	----	----	----	----	----	----	----	----	----	----	----	----	----	----	----	----	----	----	----	----	----	----	----	----	----	----	----	----	-----

CAPITAL
KAUNAS



CAPITAL
KAUNAS



CAPITAL
KAUNAS



CAPITAL
KAUNAS

