



PARDAVIMAS
PARDUODAMAS BUTAS

299 900 € (3 332.22 €/m²)

PAGRINDINĖ INFORMACIJA

Plotas
90.00 m²

Kambariai
3

Kaina: **299 900 € (3 332.22 €/m²)**
 Statusas: Aktyvus
 Pardavimas ar nuoma: Pardavimas

Papildoma informacija

NEW BUILD RESIDENTIAL OF BUNGALOW APARTMENTS IN PILAR DE LA HORADADA

New Build exclusive residential of 20 modern bungalow apartments in Pilar de la Horadada.

You can choose 2 or 3 bedrooms bungalow apartments with 2 bathrooms.

The ground floor units have large front and rear terraces and direct access to the communal pool and garden.

The top floor properties have a very large rooftop solarium.

The living space consists of a large open plan living / dining room and fully equipped kitchen with large sliding doors incorporating the outside space.

The bedrooms have plenty of space, a built-in wardrobe and the main one has a large bathroom with a walk-in shower. The bathrooms are fully furnished and equipped with shower screens, cabinets and mirrors with pleasant low-level LED and mirror lighting and underfloor heating.

All homes have a private parking space.

Pilar de la Horadada is a typical Spanish village in the most southern part of the Costa Blanca.

The large main street has supermarkets, lots of shops, restaurants and bars and some lovely squares.

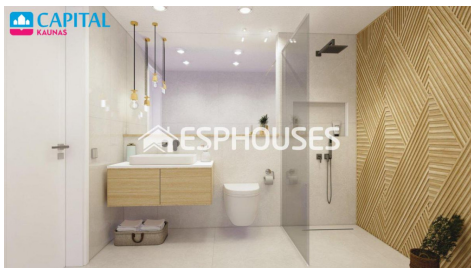
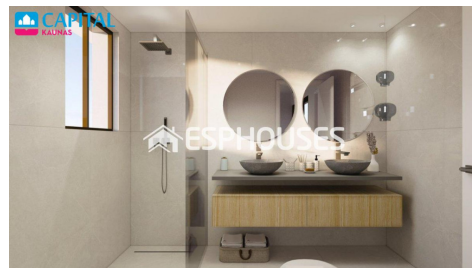
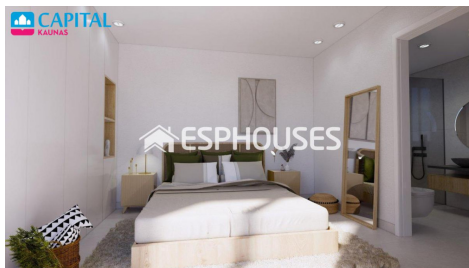
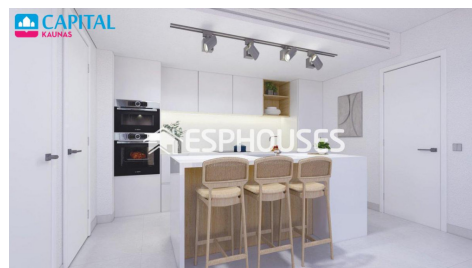
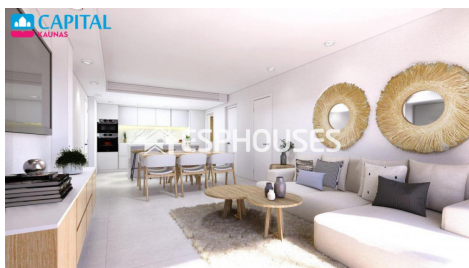
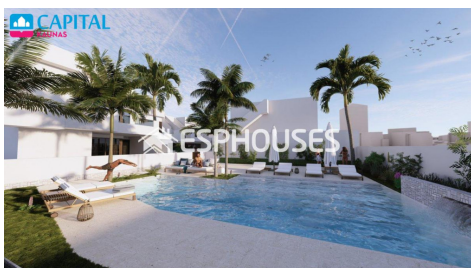
The beautiful beaches of Torre de la Horadada and Mil Palmeras with fine sand promenade is just 5 minutes away.

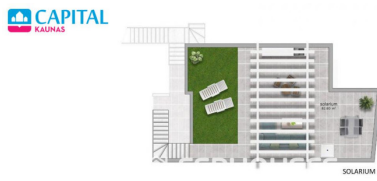
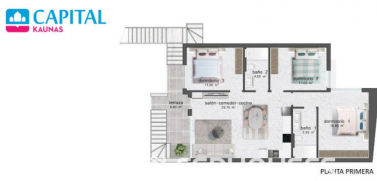
The airports of Corvera (Murcia) and Alicante are respectively 40 and 55 minutes away

Kontaktiniai duomenys

Telefono numeris: +370 609 81369

Susisiekti el.paštu: sandra.babraviciene@capitalrealty.com



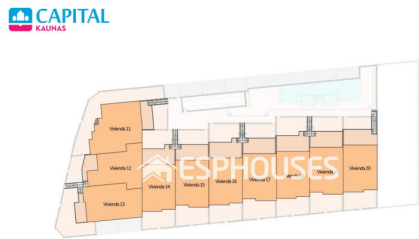


ISO A3 - ESCALA 1:75

VARIANTE 1 - DIMENSIÓES E DOMINIÓES	
CONTINENTE DE CONDOMÍNIO - 10.000,00 m ² (10.000,00 m ²)	
Área Útil	24.000,00 m ² (24.000,00 m ²)
Área de Cobertura	48.000,00 m ² (48.000,00 m ²)
Solarium	82.000,00 m ² (82.000,00 m ²)
Superfície	154.000,00 m ² (154.000,00 m ²)

ISO A3 - ESCALA 1:75

VARIANTE 1 - DIMENSIÓES E DOMINIÓES	
CONTINENTE DE CONDOMÍNIO - 10.000,00 m ² (10.000,00 m ²)	
Área Útil	24.000,00 m ² (24.000,00 m ²)
Área de Cobertura	48.000,00 m ² (48.000,00 m ²)
Solarium	82.000,00 m ² (82.000,00 m ²)
Superfície	154.000,00 m ² (154.000,00 m ²)



ISO A3 - Escala 1:250 MASTERPLAN PLANTA PRIMERA