



PARDAVIMAS  
**PARDUODAMAS BUTAS**

**345 000 €** (1 864.86 €/m<sup>2</sup>)

**PAGRINDINĖ INFORMACIJA**

Plotas  
**185.00 m<sup>2</sup>**

Kambariai  
**3**

Kaina:

**345 000 € (1 864.86 €/m<sup>2</sup>)**

Statusas:

Aktyvus

Pardavimas ar nuoma

Pardavimas

**Papildoma informacija**

NEW BUILD RESIDENTIAL COMPLEX IN FINESTRAT

New Build luxury residential complex of bungalows in Finestrat.

Complex located on the new Puig Campana golf course and has spectacular views of the skyline of Benidorm and the Mediterranean sea.

This complex, consisting of 32 bungalows with 3 bedrooms and 2 bathrooms, is built with quality materials and maximum attention to detail.

Ground floor bungalows with private garden and top floor bungalows with private solarium.

The properties have access to a large swimming pool and enjoy one of the best locations on the Costa Blanca. It is a great opportunity and privilege to be able to live with this environment of golf and beach, close to all amenities of all services considered one of the best places to invest.

Residential located on the golf course, near theme parks, a large shopping centre and a few minutes from the beaches of Benidorm.

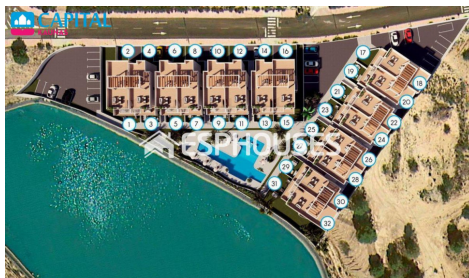
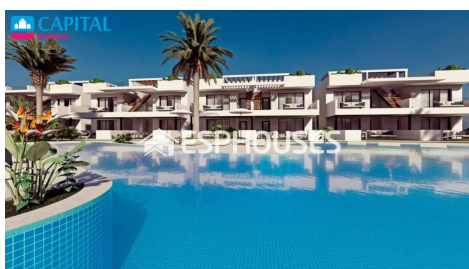
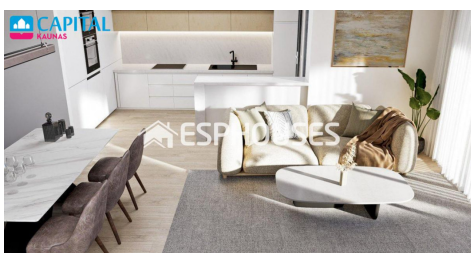
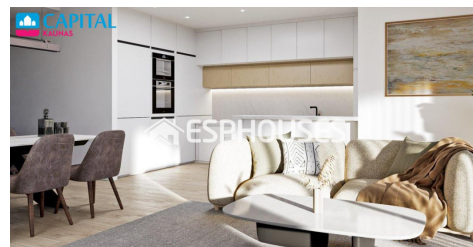
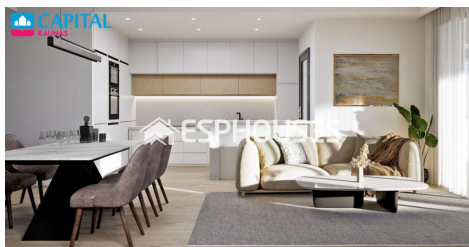
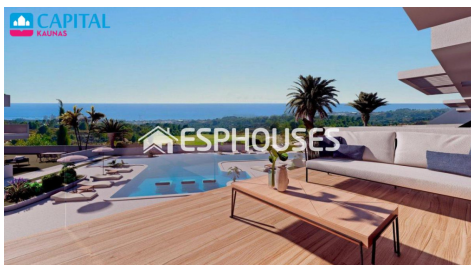
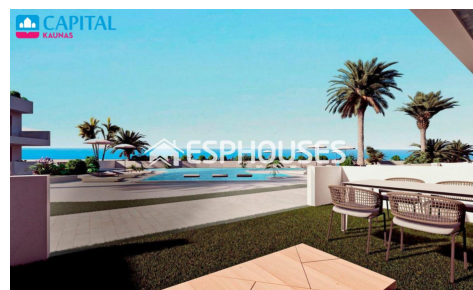
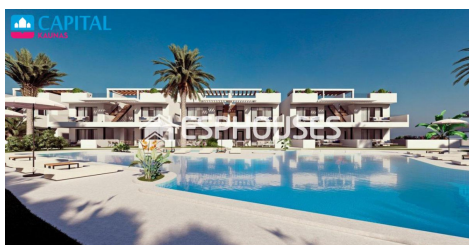
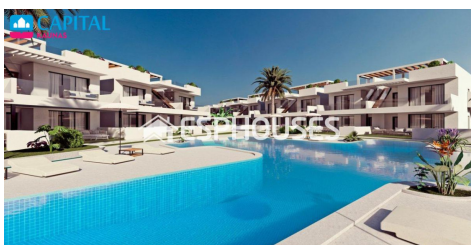
Finestrat located in the Marina Baja region of the Costa Blanca, close to neighbouring Benidorm and about 40 kilometres from the city of Alicante and the international airport.

The village is situated on the mountainside of Puig Campana and offers beautiful views of the mountains, the coast and the Mediterranean Sea.

## Kontaktiniai duomenys

Telefono numeris: +370 609 81369

Susisiekti el.paštu: [sandra.babraviciene@capitalrealty.com](mailto:sandra.babraviciene@capitalrealty.com)



PLANTA PRIMERA



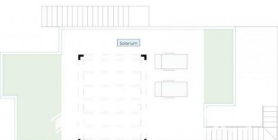
**SUPERFICIES PLANTA PRIMERA**

SALA COMUNICACION	400,00 m <sup>2</sup>
Comedor#1	100,00 m <sup>2</sup>
BAÑO	4,00 m <sup>2</sup>
Comedor#2	80,00 m <sup>2</sup>
Comedor#3	100,00 m <sup>2</sup>
BALCO	4,00 m <sup>2</sup>
BAÑO	4,00 m <sup>2</sup>
Entrada	4,00 m <sup>2</sup>
Total	740,00 m <sup>2</sup>

**SUPERFICIES**

Planta Primera	740,00 m <sup>2</sup>
Servicio	10,00 m <sup>2</sup>
Exteriores	10,00 m <sup>2</sup>
Total	760,00 m <sup>2</sup>

PLANTA SOLARIUM



**SUPERFICIES PLANTA PRIMERA**

SALA COMUNICACION	400,00 m <sup>2</sup>
Comedor#1	100,00 m <sup>2</sup>
BAÑO	4,00 m <sup>2</sup>
Comedor#2	80,00 m <sup>2</sup>
Comedor#3	100,00 m <sup>2</sup>
BALCO	4,00 m <sup>2</sup>
BAÑO	4,00 m <sup>2</sup>
Entrada	4,00 m <sup>2</sup>
Total	740,00 m <sup>2</sup>

**SUPERFICIES**

Planta Primera	740,00 m <sup>2</sup>
Servicio	10,00 m <sup>2</sup>
Exteriores	10,00 m <sup>2</sup>
Total	760,00 m <sup>2</sup>

